



Model No.: DLa-13W



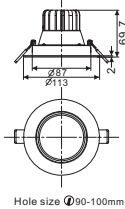
MAIN FEATURES:

- Perfectly suitable to replace traditional 3.5 inch down light.
- Available in CRI 80+.
- Dimming method: Triac.
- Unique designed reflector, perfect lighting distribution without any shadow.
- Fin-style 6063 aluminum heat sink for high efficient heat dissipation.
- All-round beam direction adjustable.

LIGHT	CREE COB LED
INPUT VOLTAGE	100-240V / 100-120V / 220-240V AC, 50-60Hz
DRIVER	CE, SAA, UL approved
DIMMABLE	Triac
HOUSING COLOR	White+black
OPERATING TEMPERATURE RANGE	-20~+45°C

MODEL NUMBER	POWER	LED CURRENT	COLOR TEMPERATURE	LUMINOUS FLUX (lm)	Beam angle (°)	COLOR RENDERING INDEX_CRI
DLa-13W	13W	300mA	● 2,700K	884 ± 5%	14°, 24°	80+
			● 3,000K	975 ± 5%		
			○ 4,000K	1027 ± 5%		
			○ 5,000K	1079 ± 5%		

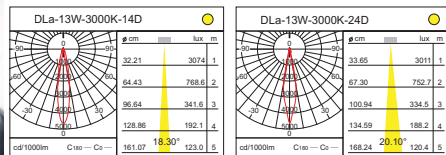
DRAWING



2types of reflector narrow, medium



High efficient heat dissipation design



Model No.: DLa-30W*2 DLa-30W*3



MAIN FEATURES:

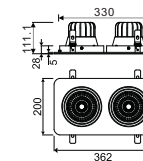
- Available in CRI 80+ or 90+.
- Dimming methods: Triac, DALI, 0-10V.
- Available in 2 heads & 3 heads.
- Fin-style 6063 aluminum heat sink for high efficient heat dissipation.
- All-round beam direction adjustable.
- Installation can be recessed or suspending.

LIGHT	CREE COB LED
INPUT VOLTAGE	100-240V / 100-120V / 220-240V AC, 50-60Hz
DRIVER	CE, SAA, UL approved
DIMMABLE	Triac, DALI, 0-10V
HOUSING COLOR	White+black
INSTALLATION	Recessed or suspending
OPERATING TEMPERATURE RANGE	-20~+45°C

PHOTOGRAPHIC DATA >>>Page 17

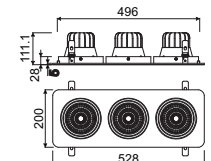
DRAWING

DLa-30W*2



Hole size 1335(L)*175(W)mm

DLa-30W*3



Hole size 1500(L)*175(W)mm